



Aldersley House Crossland Crescent, Wolverhampton, WV3 9PU

£650



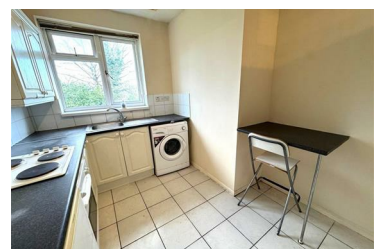
****GAS AND ELECTRIC INCLUDED WITH RENT****

Situated in a popular residential area convenient for the majority of amenities including schools, shops and Tettenhall Village.

This one bedroom flat is situated in a beautiful setting with well maintained communal gardens. The property is accessed by a gated entrance with private secure off-road parking.

The flat consists of a sitting room with a separate bedroom. Good size fitted kitchen with integrated electric hob and electric oven with additional space for white goods.

- Gas & Electricity Charges Included in Monthly Rent
- Fitted Kitchen With Intergrated Electric Oven And Hob
- Separate Shower Room With WC
- Single Occupancy Only
- Well Kept Communal Grounds
- One Bedroom Flat
- Good Size Bedroom
- Gas Central Heating Included in Monthly Rent
- Gated Secure Off Road Parking
- Available Immediately



102 Compton Road, Wolverhampton, WV3 9PU

Tel: Tel. 01902 773944 Email: Email. info@rent-me-now.co.uk Web. www.rent-me-now.co.uk